

35767/35768/35769

INSTRUCTION  
MANUALMODE  
D'EMPLOIMANUAL DE  
INSTRUCCIONES**Thank You**

You've just purchased a lighting product designed and built to provide you with years of enjoyment.

**Merci**

Vous venez d'acheter un système d'éclairage conçu et fabriqué pour vous donner des années de satisfaction.

**Gracias**

Has comprado un producto de iluminación diseñado y fabricado para proporcionarte muchos años de disfrute.

**SAVET HESEINSTRUCTIONSFORFUTUREREERENCE**

- Follow the assembly instructions by reading the numerical progression.
- Use a qualified electrician for installation of this lighting fixture.
- Before installing fixture, disconnect power by turning off the circuit breaker or by removing the fuse at the fuse box.
- All electrical connections must be in accordance with local and National Electrical Code or Canadian Electrical Code standards.
- Use CSA or UL listed wire connectors suitable for the gauge, type and number of conductors.
- Attach junction box grounding wire (green or bare copper) and the bare copper wire from the fixture together. If junction box has no ground wire, attach the bare copper fixture wire to the green ground screw on the crossbar.

Estimated Assembly Time: 20 minutes

Tools Required For Assembly (not included): Flathead screwdriver, Phillips screwdriver, Pliers, Electrical tape and Wire cutters.

Helpful Tools (not included): Wire strippers, Ladder

**EUROfase****CONSERVEZ CES INSTRUCTIONS À TITRE DE RÉFÉRENCE ULTÉRIEURE**

- Suivez les instructions d'assemblage en les lisant dans l'ordre numérique croissant.
- Faites appel un électricien qualifié pour l'installation de ce luminaire.
- Avant d'installer le luminaire, coupez le courant en déclenchant le disjoncteur ou en retirant le fusible dans la boîte à fusibles
- Tous les branchements électriques doivent être conformes aux codes locaux et au Code national de l'électricité ou aux normes du Code canadien de l'électricité.
- Utilisez des capuchons de connexion homologués ACN ou UL convenant à la taille, au type et au nombre de conducteurs.
- Raccordez le fil de mise à la terre de la boîte de sortie de courant (vert ou en cuivre dénudé) au fil en cuivre dénudé du luminaire. Si la boîte de sortie de courant ne possède pas de fil de mise à la terre, raccordez le fil en cuivre dénudé du luminaire à la vis de mise à la terre verte de la traverse.

Temps d'assemblage approximatif : 20 minutes

Outils requis pour l'assemblage (non compris) : Tournevis plat, tournevis cruciforme, pince, ruban isolant et coupe-fils.

Outils utiles (non compris) : Outils à dénuder, échelle

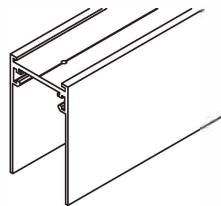
**CONSERVA ESTAS INSTRUCCIONES PARA CONSULTAS FUTURAS**

- Sigue las instrucciones de ensamblaje según el orden numérico.
- Contrata a un electricista calificado para instalar esta lámpara.
- Antes de comenzar a instalar esta lámpara, corta la electricidad apagando el cortacircuitos o retirando el fusible en la caja correspondiente.
- Todas las conexiones eléctricas tienen que cumplir con las normas locales y del Código Nacional de Electricidad (N.E.C., por sus siglas en inglés) o del Código Canadiense de Electricidad.
- Usa conectores de cable con clasificación UL o CSA, apropiados para el calibre, tipo y cantidad de conductores.
- Une el cable a tierra de la caja de conexiones (verde o cobre pelado) y el cable de cobre pelado de la lámpara. Si la caja de conexiones no tiene cable a tierra, conecta el cable de cobre pelado de la lámpara al tornillo verde a tierra en la barra transversal.

Tiempo aproximado de ensamblaje: 20 minutos

Herramientas necesarias para el ensamblaje (no incluidas): Destornillador de cabeza plana, destornillador Phillips, alicate, cinta de electricista y cortacables.

Herramientas útiles (no incluidas): Pelacables, escalera

**SURFACE MOUNT + PENDANT TRACK**

number

L

35767-01

3ft.

35768-01

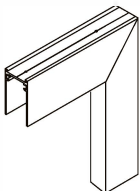
6ft.

35769-01

8ft.

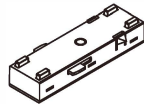
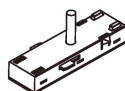
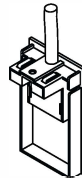
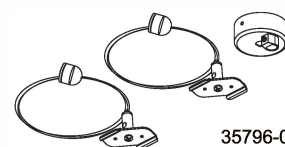
**ACCESSORIES**

35814-01

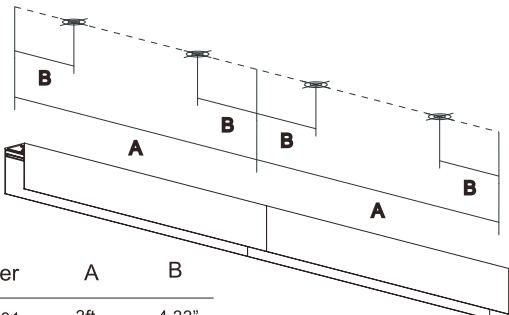
Horizontal corner  
L-shaped connector

36702-01

Vertical corner L-shaped connector


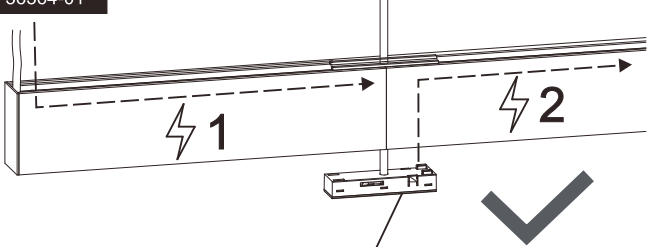
36361-01 (for pendant)  
36362-01 (for surface mount)  
Circuit joint36363-01 (for pendant)  
36364-01 (for surface mount)  
Power joint36368-01  
End cap  
with power cord36370-01  
End cap  
without power cord35797-012  
Pendant kit35796-015  
Pendant kit  
with canopy35795-015  
Surface mounted clip35799-02 13ft.  
35800-02 49ft.  
PC cover

# SURFACE MOUNT INSTALLATION



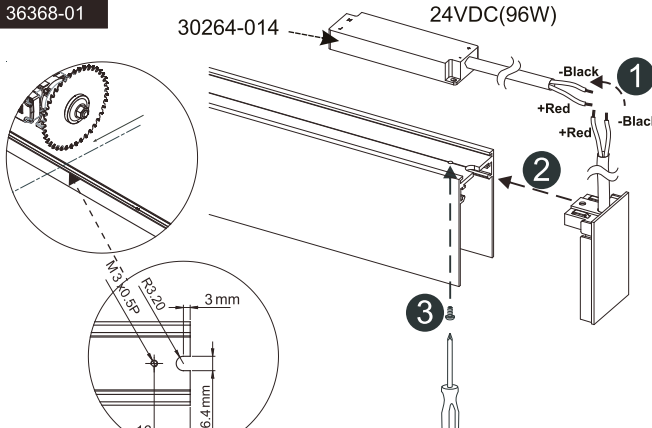
number	A	B
35767-01	3ft.	4.33"
35768-01	6ft.	4.33"
35769-01	8ft.	4.33"

36364-01



36368-01

30264-014 24VDC(96W)

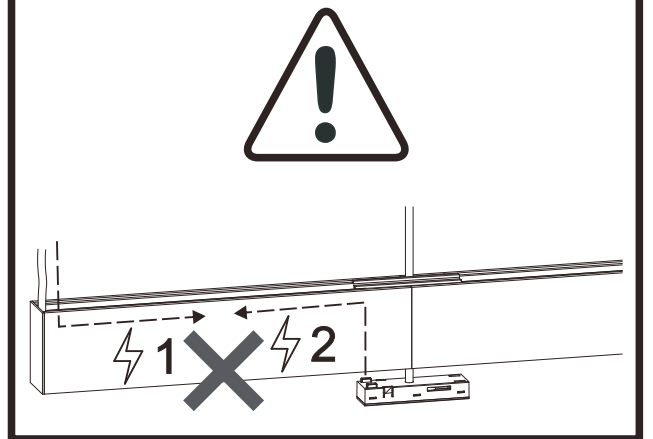


1 -Black  
+Red  
+Red  
-Black

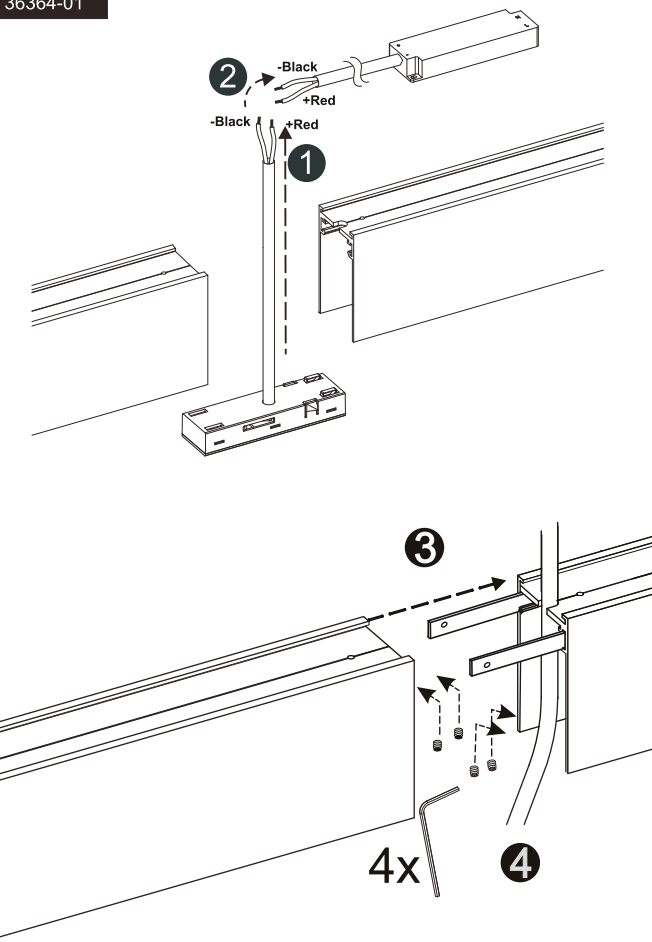
2

3

3mm  
6.4mm  
16mm  
R3.20  
N3.10.59



36364-01



2 -Black  
+Red  
-Black  
+Red

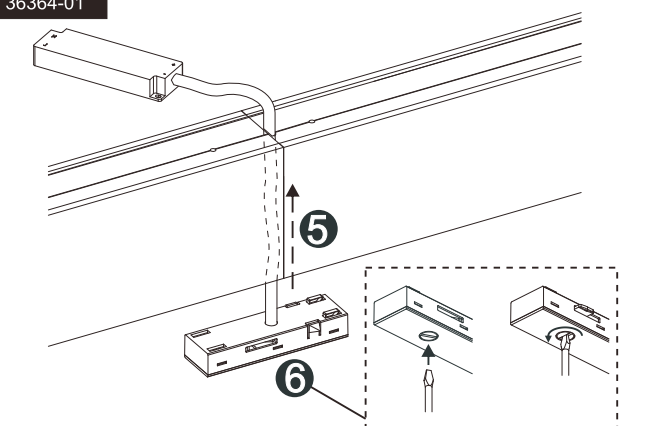
1

3

4x

4

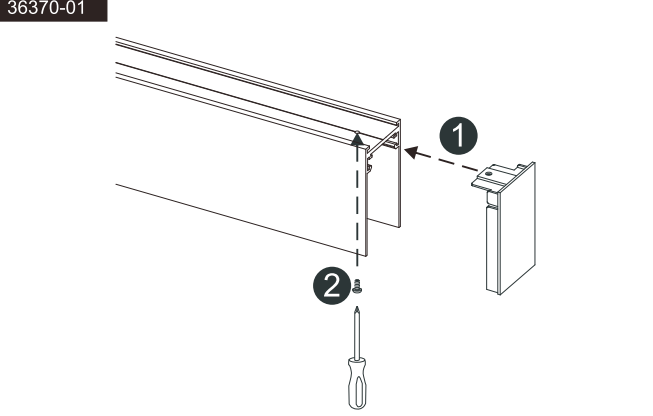
36364-01



5

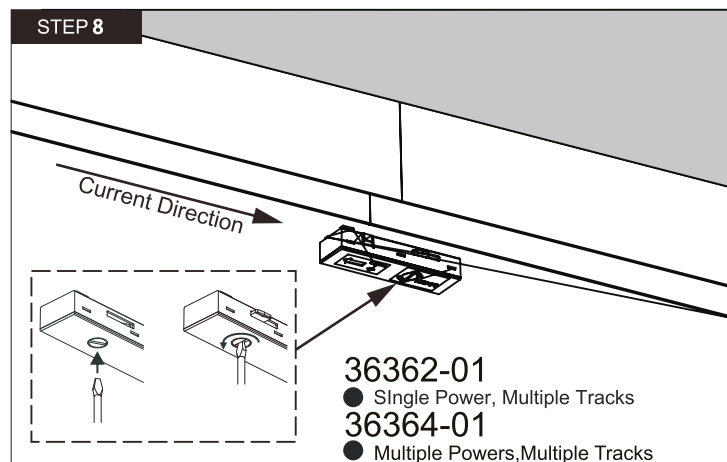
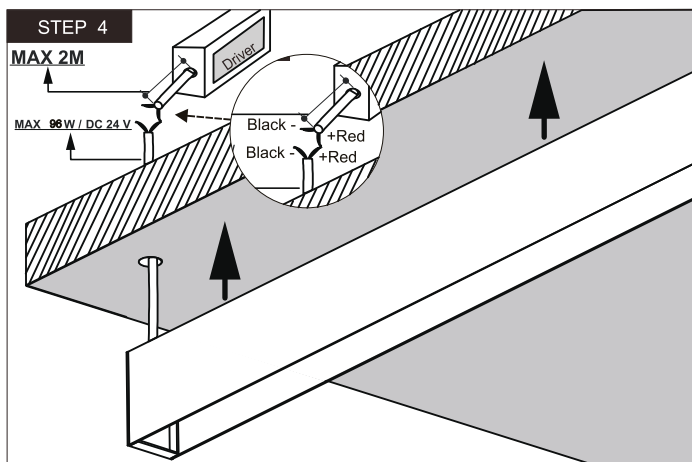
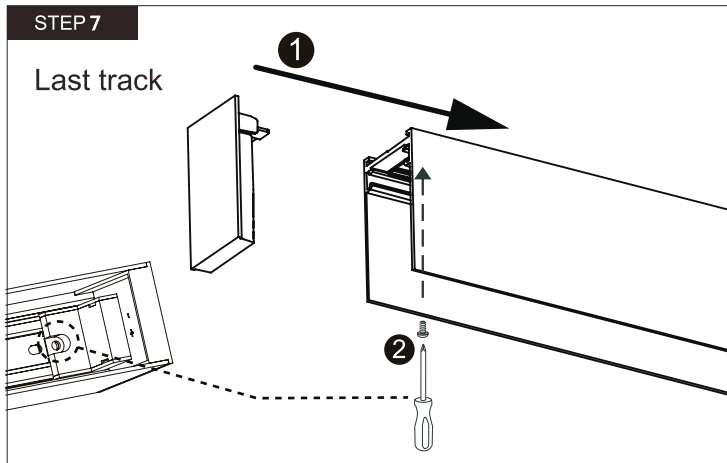
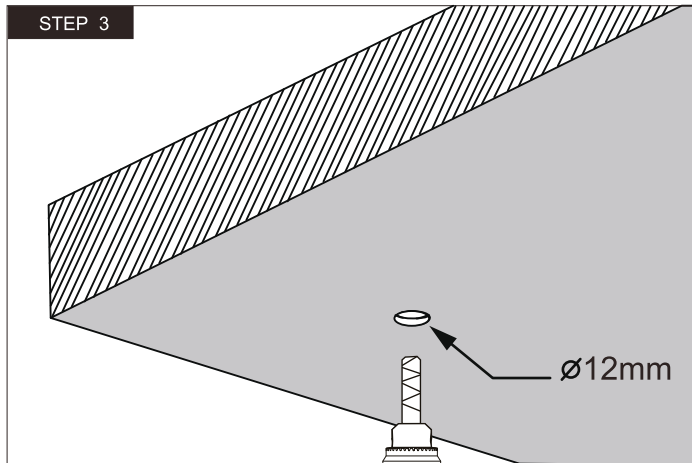
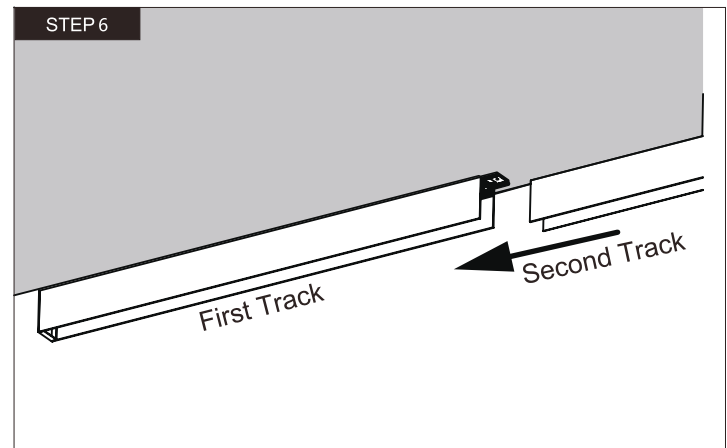
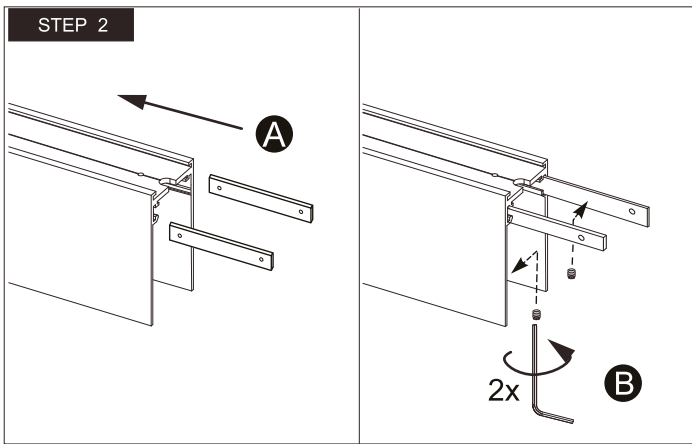
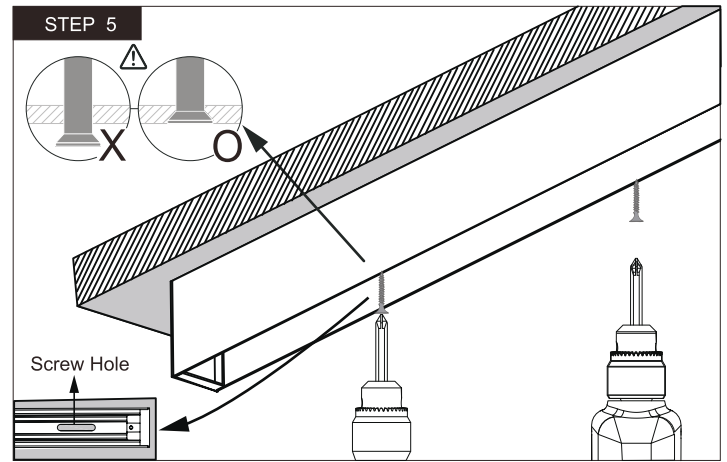
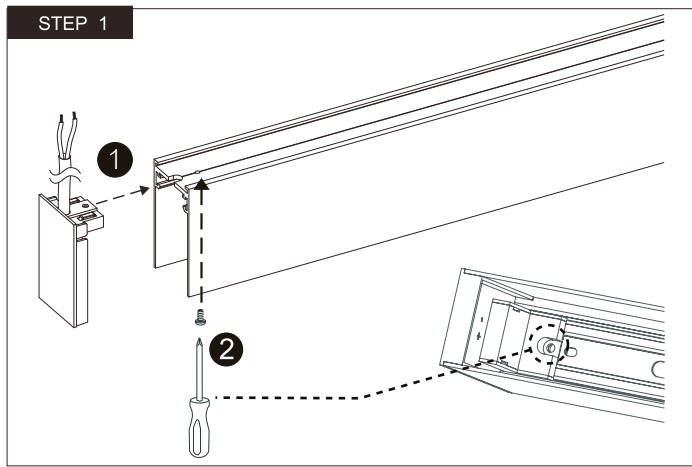
6

36370-01

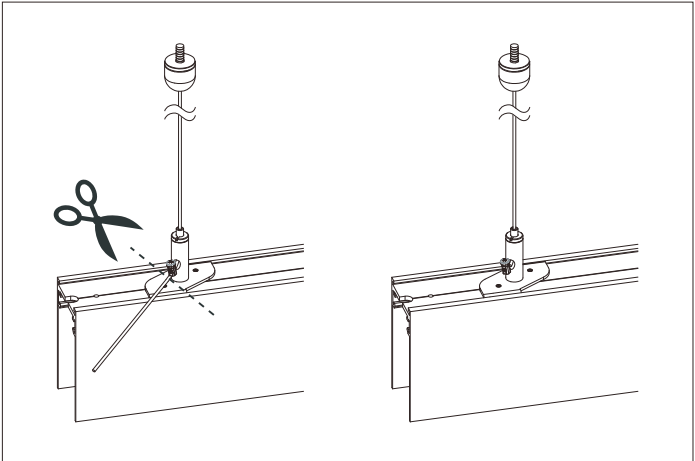
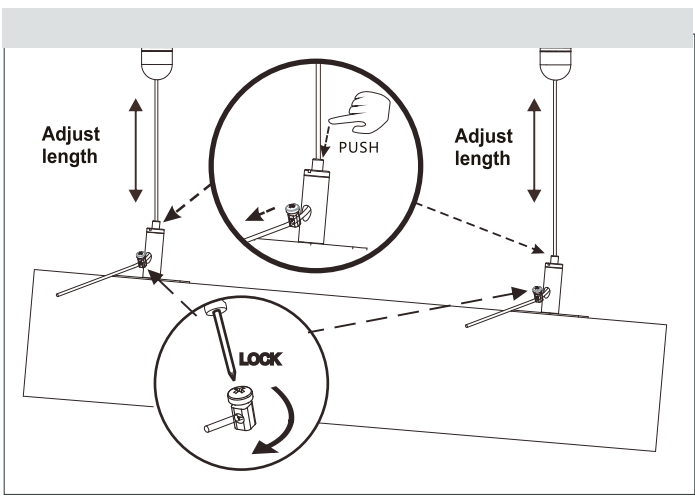
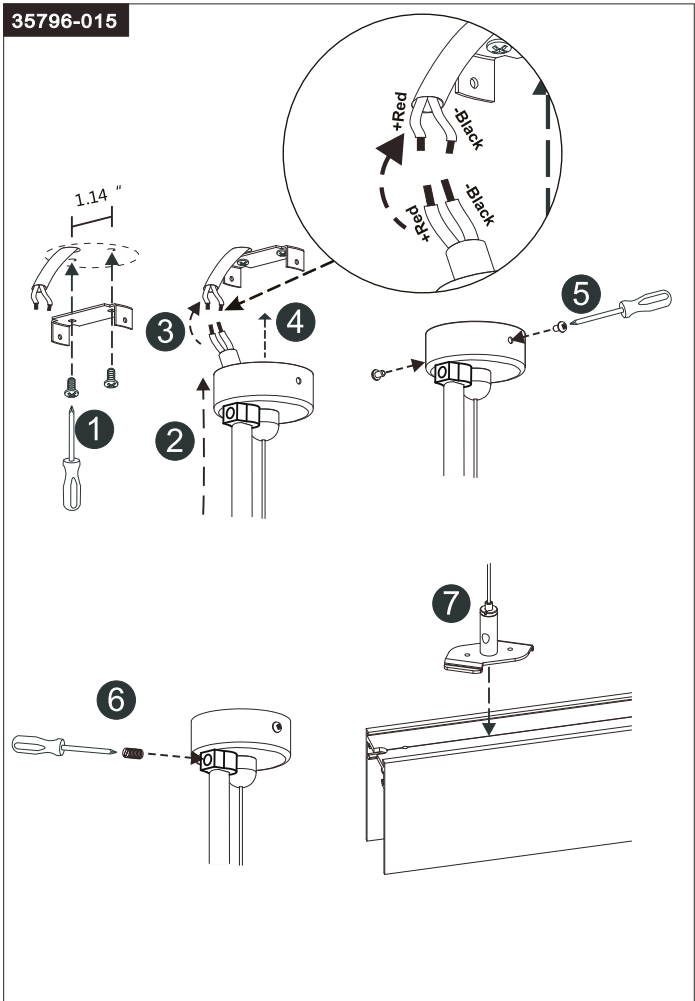
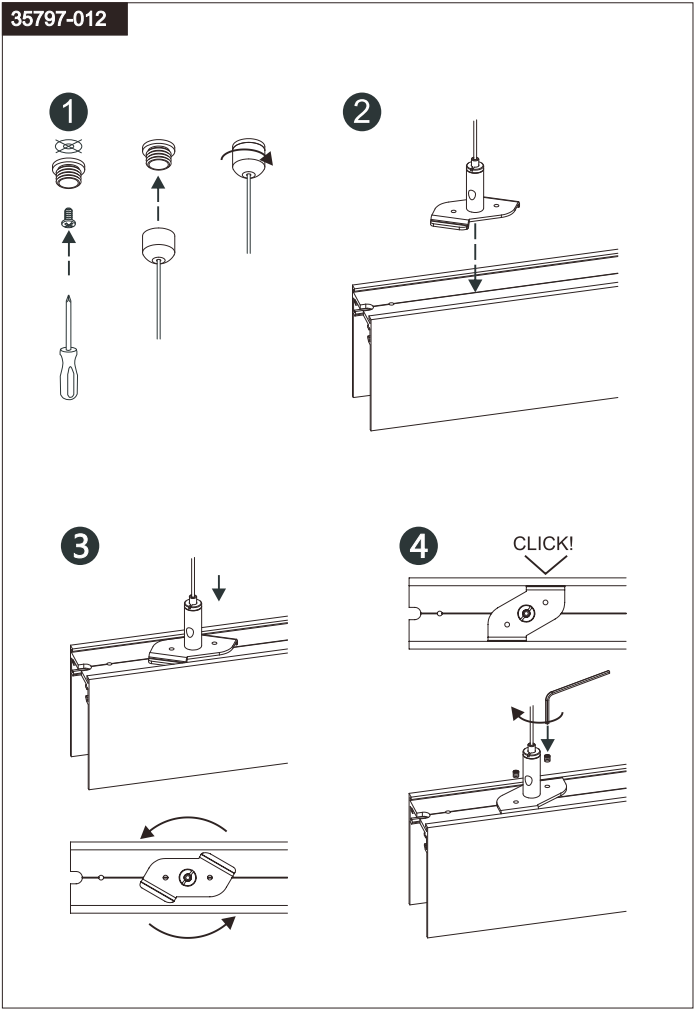
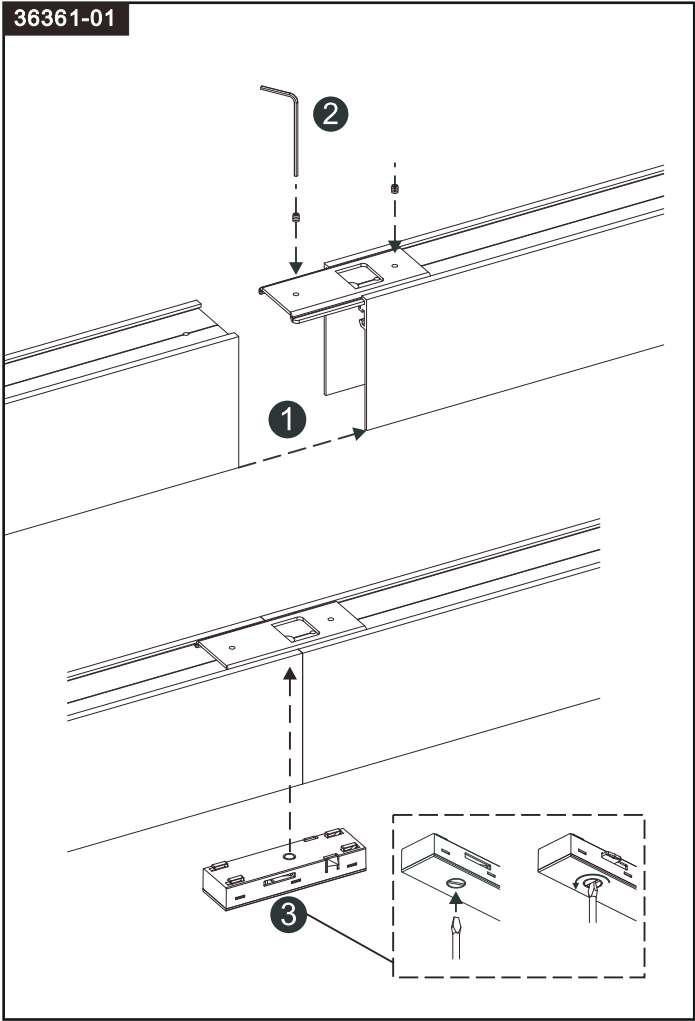


1

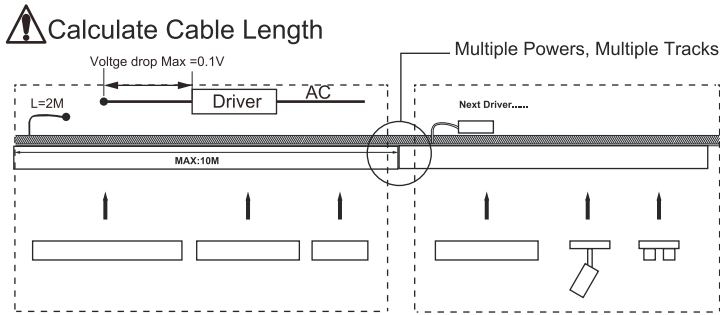
2



# PENDANT INSTALLATION



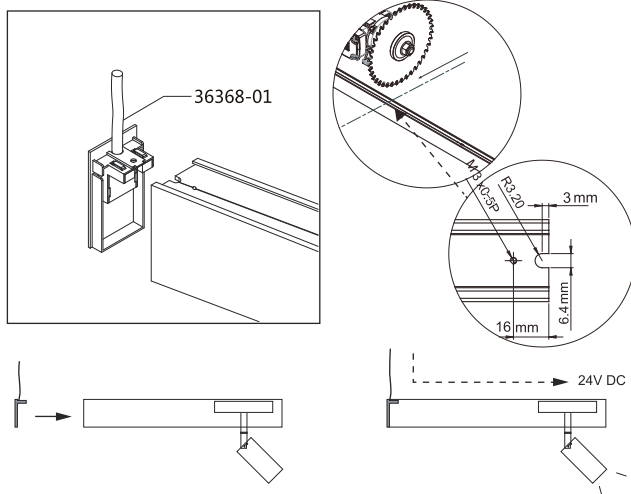
# Application Illustration



## NOTE:

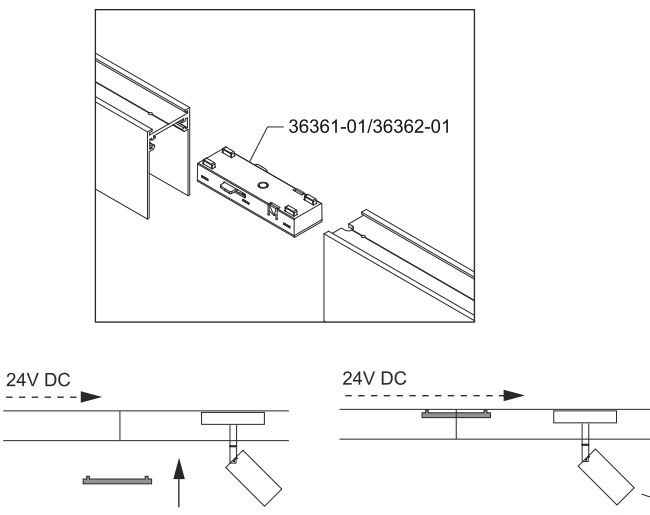
1. Max wattage linkable per loop for 24VDC is 96W.
2. Max length of track linkable per loop is 10M , and the max cable length between driver and track is 2M.
3. Dimming modules are compatible to PWM dimming driver only.
4. To use drivers not on recommended list , it require compatibility test before installation.
5. Tracks allows continuous linkable without limitation, also can divide into sections to light up individual area, making lighting application easy as 123.
6. Minimum voltage per loop is 22VDC (measure at the end of the loop), under 22VDC per loop might cause abnormal.
7. Calculating max wattage connection, save 20% buffer for linear modules, and 25% buffer for other modules.
8. Use driver not in the recommended list might cause module flickering, unstable dimming and/or noise, even causing module failure.
9. When multiple drivers are use in the connection, make sure the connector without circuit is used to divide the loop.
10. When installation tracks (pipes), make sure measuring the voltage from 36364-01 & 36368-01/36369-01 with the driver connected first, without modules, to see if the voltage is 24VDC, then measure the track & 36364-01 & 36368-01/36369-01 to see if the voltage drop is 0.1V, if the voltage drop is over 0.1V, make sure the connector is secured properly, warpage is not allowed in the connection, also check the cleanliness of the copper connector, copper connector can be cleaned using alcohol.

## 1 Single Power, Single Track



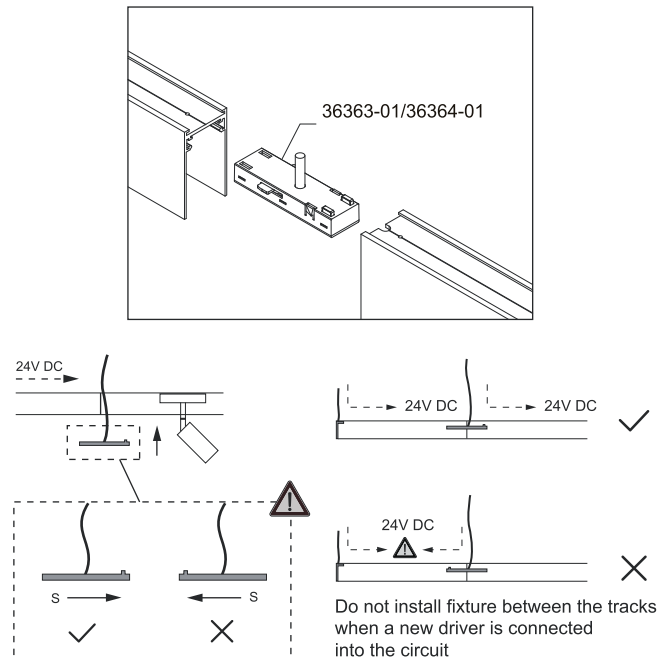
Using power end cap(36368-01) as power feed

## 2 Single Power, Multiple Tracks



Using circuit joint (36361-01/36362-01) to connect between tracks

## 3 Multiple Powers, Multiple Tracks



Using power joint (36363-01/36364-01) to connect more drivers